



# Studying Populations

A Computer Assisted Learning Package for Basic Epidemiological Methods

Version 4.0 (March 2017)

Used in 80 countries around the world.

Endorsed by the Council of the International Epidemiological Association

An educational resource recommended by the Faculty of Public Health Medicine of the Royal Colleges of Physicians of the United Kingdom

Read about the package on the [Supercourse](#) site

**Studying Populations is free to all individual and institutional users**

## Learning by Doing

For PCs running under Microsoft Windows 10 (and probably earlier versions) 32- and 64-bit versions.

**Studying Populations** is a computer assisted learning package for epidemiological methods. It is suitable for anyone working in health sciences including medical students, Masters students, public health practitioners and clinicians. It covers many basic epidemiological concepts in a set of over 80 interactive exercises and simulations.

**Students** - Learn by doing! With Studying Populations you can explore population pyramids, life tables, simple graphical analysis, good table construction, questionnaire design, screening test parameters and much more.

**Teachers** - Use your time more productively by letting your students explore basic epidemiological methods and concepts at their own pace and in their own way. Tailor the program to suit your own courses.

## The Package

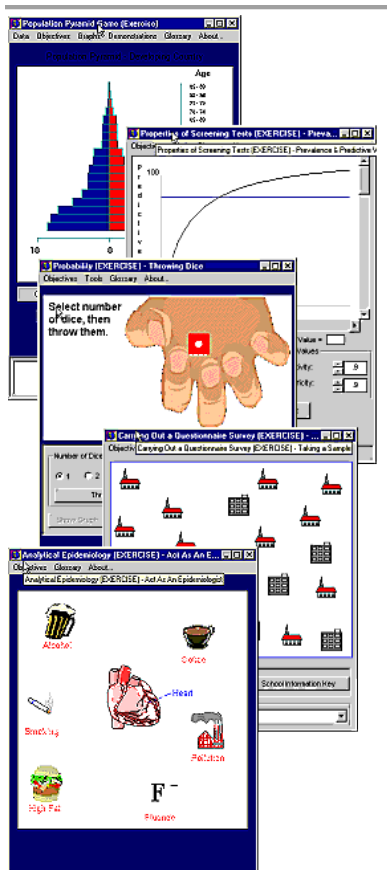
We developed the package over 5 years, through collaboration between epidemiologists in the Universities of Dundee, Aberdeen and Glasgow, Scotland. We designed it to help our medical and Masters students understand methodological aspects not easily conveyed by the written word.

The contents cover aspects of demography, study design, questionnaire design, data presentation, data analysis, sampling, probability and inference, and theory and methods for population screening. There are commentaries on the concepts illustrated by many of the exercises. Multiple choice questions and a glossary based on the Dictionary of Epidemiology are included.

This software consists of two parts. The first, known as **Studying Populations**, is a suite of programs of instructional material. The second is a **toolkit** for teachers to modify and expand Studying Populations for local use.

Comprehensive manuals for using and modifying the software are included.

You can read more about the package in a lecture on the [Supercourse](#) site.



# Installing the software

## Studying Populations Version 4.0 for Windows 10

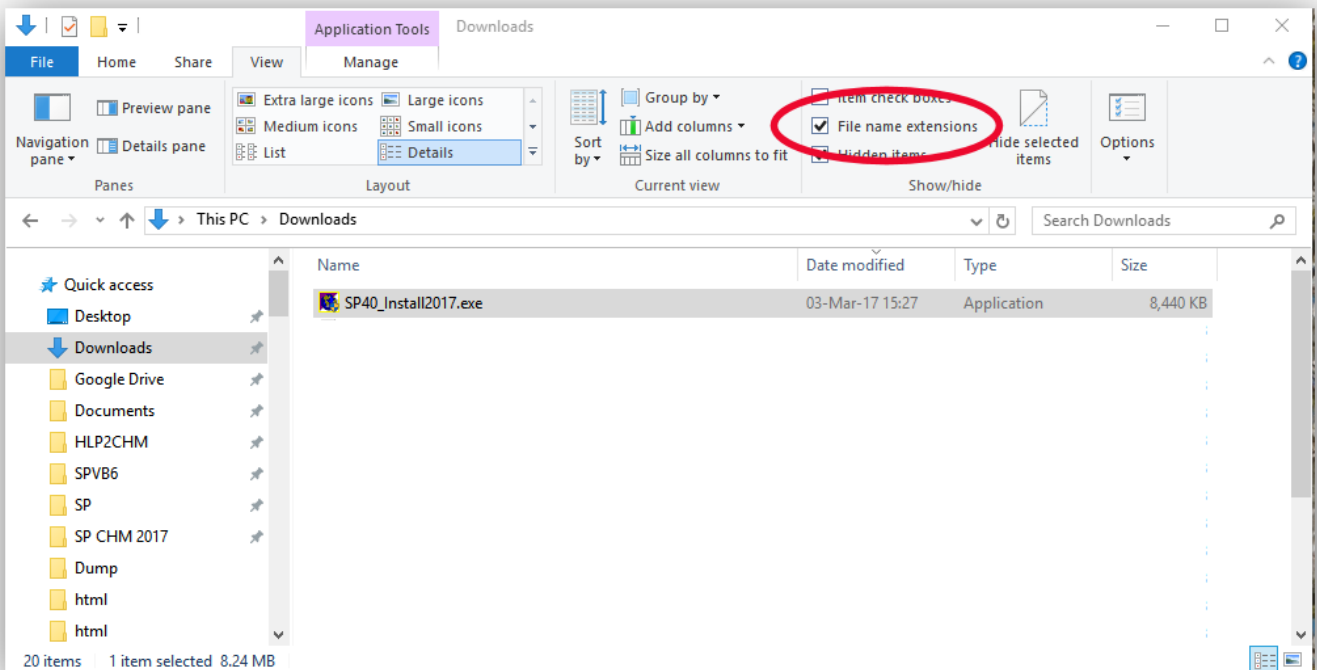
### Minimum requirements

- Windows 10 (earlier versions not tested)
  - Screen resolution of 1280 x 1024
  - 256 colours
  - Microsoft Internet Explorer 4
  - *Tested on Windows 10. Should work on Windows 98, NT4, 2000, XP, 7 & 8*
  - *1280 x 1024 or larger recommended*
  - *True Color 24-bit recommended*
- Microsoft Internet Explorer 4 or higher MUST be installed, but it need not be your default browser.*

To download SP Version 4.0 (March 2017) for Windows 10, click [Studying Populations Program 4.0 here](#) or on the web page from where you downloaded this pdf file. The download file size is 8.4MB. This version will probably work on earlier versions of Windows Operating Systems whether 32- or 64-bit, but this has not been tested.

Make a note of the folder to which the file has been downloaded. You will need this so you can find the file and to start the installation process. In Windows 10 this folder is by default named *Downloads*. This is illustrated below showing the Downloads folder in File Explorer.

The file extension (.exe) can be made visible in Windows 10 by clicking the View tab and then the file name extensions tick box.



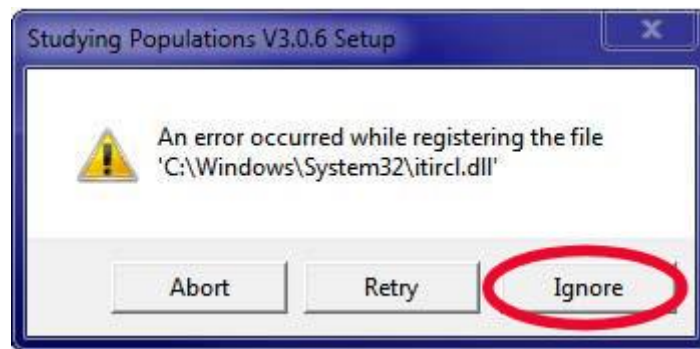
When you have downloaded the file:

- Ensure you have *Administrator* privileges for installing a program.
- To install, open File Explorer (the program which shows folder and file names) and find the downloaded file (SP40\_Install2017.exe). Double click on the file's name to start the installation process and follow the instructions on the screen. If you use the default installation folder (C:\SPv4), you will have nothing to key in. 321 files are copied to the installation folder.

In the final dialog box before the last stage of installation, you are offered the option to change the installation folder. Accept the default folder of C:\SPv4 **unless** you unzipped the 321 files into a folder other than C:\SPv4. In that case enter the full path and name of the folder you unzipped to. Then click the button that looks like this:



The installation should complete on its own. You may see a message that a file cannot be registered (an example is given below) and offered the option to abort, retry or ignore. You should click **Ignore**.



**IMPORTANT** Unlike earlier versions of Studying Populations, Version 4.0 has been reprogrammed so that it does NOT require additional software for displaying the popups.

The SP download files have been checked for viruses with Kaspersky Internet Security, using a virus definition file dated within one day of posting the files on this website. Although no viruses have been detected and no untoward events have occurred with downloads over the many years' development of this software, you are warned that you download the files at your own risk.

You may copy the installation file and give it to others.

For advice on installation problems, go to the [next page](#).

### ***The Toolkit (for 32- and 64-bit Windows)***

Click the [Studying Populations Toolkit](#) link here or on the web site to copy the installation file to your computer. The download file size is about 3.5MB

When you have downloaded the file, find its name (SPv4ToolsSetup.exe) using File Explorer and double click on it. This will start the installation process. Follow the instructions on the screen.

The Toolkit is free to all users.

# Frequently Asked Questions

## Installation Problems

**This software *does not work on Apple Macs***

### *Studying Populations*

The most common reason for failure to install Studying Populations is a failure of the download process in which the installation file becomes corrupted or does not download completely. The size of the complete file (SP40\_Install2017.exe) is about 8.4MB. If your download is less than 8MB then it is certainly incomplete.

- a. My first suggestion is that you download the file again. Some computers cannot cope with the download for unknown reasons, so we recommend you try another computer.

The download may not work with some internet browsers. Try using Microsoft's Internet Explorer or Edge.

Another reason for failure to download the file is because your system's firewall prevents the downloading of .exe files. This is known to occur for UK NHS systems. Seek the help of your IT administrator.

- b. If you successfully copied the 321 files to the installation folder but never reached the blue Installation screen, you can open the folder C:\SPv4\Setup (assuming your installation folder is C:\ SPv4) and double click on the file called setup.exe to try again.
- c. Turn off your antivirus program while you install (not recommended unless you first unplug your computer from the internet).

### *The Toolkit*

**The Toolkit will not work unless Studying Populations is already installed on your computer.**

After you have installed Studying Populations and the Toolkit, run the Toolkit. A dialog box appears which asks you to find the folder in which you installed Studying Populations. The Toolkit uses this information to locate the files you want to modify. Provided you do not subsequently move or uninstall Studying Populations, you will not be asked to find the installation folder again.

Once you have found the folder, the OK button on the dialog box becomes active. Click it and explore what the Toolkit can do for you.

## Updates

The programs are occasionally updated but help is unavailable for dealing with installation or other problems you may have with the software. However the software has been available for many years with negligible requests for assistance so we hope you will have pain-free enjoyment.

Bugs and major installation problems should be reported to me at [c.d.v.florey@dundee.ac.uk](mailto:c.d.v.florey@dundee.ac.uk)

Charles Florey  
31 March 2017